



Samui Grand Park Hill

A place to call home





Samui Grand Park Hill

A place to call home



Serene Location



Samui Grand Park Hill is ideally situated on the spectacular island of Koh Samui, a haven of peace and tranquility with a gateway to Pha Ngan and Angthong Islands. Samui Grand Park Hill design is in complete harmony with nature.

Destination



Koh Samui continues to be a top rated travel destination, with its endless beaches, turquoise blue waters, an award winning airport and a modern shopping mall. More than 1.5 million tourists from around the globe visit this tropical island each year to enjoy all of its beauty and everything it has to offer.

Map

Samui Grand Park Hill is located on the northern part of Koh Samui, conveniently located from the following :

- 3 minutes from Lom Phraya Pier,
- 3 minutes from Mae Nam Beach,
- 2 minutes from Mae Nam Fresh Market,
- 2 minutes from Global Shopping Mall.
- 3 minutes from Santiburi Samui Country Club
- 10 minutes from Chaweng Beach
- 15 minutes from Bangkok Samui Hospital
- 10 minutes from Nathon Pier 3 (Seatran Ferry Pier)
- 15 minutes from Samui International Airport
- 10 minute from Central Festival Samui





Ang Thong Island

Ang Thong island is located in Ao Thai, Ang Thong, Koh Samui, Surat Thani. Just 20km west of Koh Samui, Ang Thong island once was a restricted area for a navy security base of Ao Thai. Now a National Marine Park, with its spectacular views, lakes, cliffs, caves, various birds and coral reefs. It has become one of the dream destinations for tourists, locals and foreigners alike.

Sunset

A wide-angle photograph of a sunset over a calm body of water. The sun is a bright orange orb positioned just above a range of dark, silhouetted mountains. The sky is filled with large, dark clouds that are illuminated from below, creating a dramatic play of light and shadow. The sun's reflection is a vertical line of shimmering orange light on the water's surface. In the foreground, several dark, jagged rocks are scattered across the water and the dark, pebbly beach. The overall color palette is dominated by warm oranges, yellows, and deep blues.

Spectacular sunsets can be viewed from Bang Po and Chaweng Beaches or take a sunset cruise for an unforgettable experience.



Master Plan Layout



Masterplan

Samui Grand Park Hill Master Plan



VILLA TYPE A



VILLA TYPE B

VILLA TYPE A

- 3 Bedrooms

Samui Grand Park Hill

990/9



Villa Type A



Villa Type A



Villa Type A



Villa Type A



Ground Floor Plan

Interior

1. Living	}	53.60 sq.m.
2. Dining		
3. Kitchen		
4. WC		
5. Laundry		
6. Bed_1	}	34.60 sq.m.
7. Bed_2		
8. Bed_3		

Exterior

9. Deck Pool	}	60.00 sq.m.
10. Seat		
11. Swimming Pool	}	40.20 sq.m.
12. Car Park.		
13. Pump RM.		
14. Store		

Total Area 290.90 sq.m.



Living and Dining Room

The living area is designed to bring nature indoors. Spacious kitchen, open plan with high ceilings and pool view, make it a great space for entertainment for the entire family.







Swimming Pool

The tranquil design of the pool with cascading water, curved edges and a sunken seating area provide an atmosphere of luxury and relaxation. Type A-3 bedroom swimming pool is 40.20 sq.m. in size. The pool is designed with a shallow area, for the safety of small children.





Bedroom

Type A is a 3 bedrooms villa consisting of a Master Suite is 34.6 sq.m. and 2 guest rooms 24 sq.m. each. Every bedroom has its own view of the pool and a private ensuite bathroom. Custom build in wardrobe package is available.



Bathroom

Master suite bathroom comes with a full size bathtub overlooking the pool, double sinks and a rain shower. The use of travertine stone throughout the bathroom gives it a luxury spa feeling.



An architectural rendering of a modern villa at dusk. The villa features a prominent cantilevered roof and a large glass facade. A car is parked in an open garage area. The scene is set against a backdrop of lush tropical trees and a dark sky. The text 'VILLA TYPE B' is overlaid in a large, white, serif font.

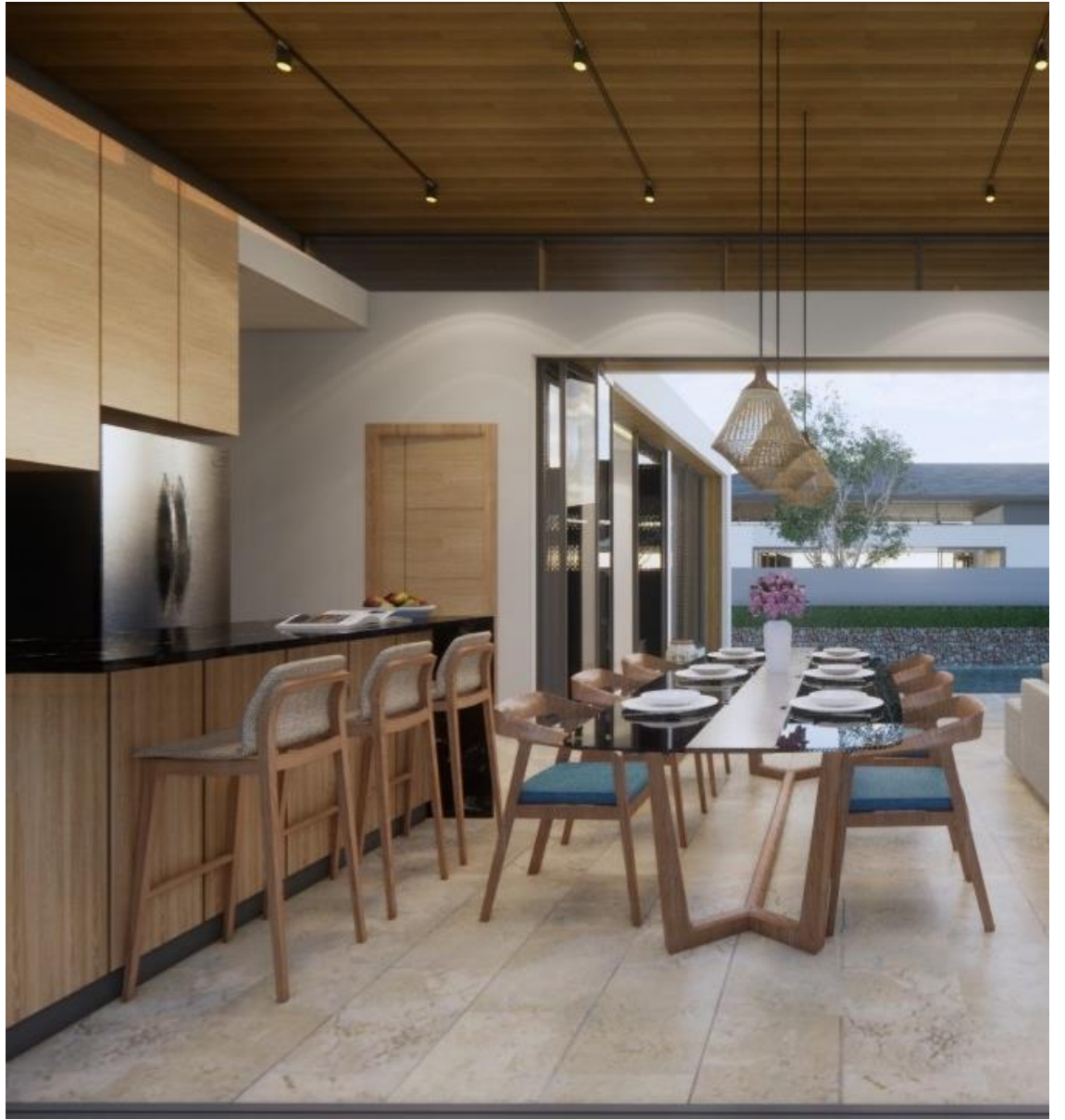
VILLA TYPE B

- 2 Bedrooms

Samui Grand Park Hill







Living and Dining Room

The living room transitions to a fully equipped kitchen complete with a breakfast bar. The open air plan with large windows on both sides brings an abundance of light and nature into the living space.





Swimming Pool

The tranquil design of the pool with cascading water, and a sunken seating area provide an atmosphere of luxury and relaxation. Type B-2 bedroom swimming pool is 22.5 - 24.5 sq.m. in size.







Bedrooms

Type B is a 2 bedroom villa consisting of a Master Suite 30 sq. m. and a guest room 24 sq. m. Each room has its own view of the pool and a private ensuite bathroom. Custom build in wardrobe package is available.



Bathroom

Master suite bathroom comes with a full size bathtub with garden or pool view, double sinks and a shower. The use of quality materials and finishes provides a luxury spa feeling.



Villa Type B1



Ground Floor Plan

Interior

1. Living	}	47.70 sq.m.
2. Dining		
3. Kitchen		
4. WC		
5. Laundry		
6. Bed_1	}	29.10 sq.m.
7. Bed_2		
8. Swimming Pool		23.20 sq.m

Exterior

9. Deck Pool		39.50 sq.m
10. Car Park	}	34.00 sq.m.
11. Pump RM.		

Total Area 200.45 sq.m.

Villa Type B2



Ground Floor Plan

Interior

1. Living	}	47.25 sq.m.
2. Dining		
3. Kitchen		
4. WC		
5. Laundry		
6. Bed_1	}	25.75 sq.m.
7. Bed_2		
8. Swimming Pool	}	24.20 sq.m.

Exterior

9. Deck Pool	}	39.00 sq.m.
10. Car Park		
11. Pump RM.		

Total Area 203.90 sq.m.

Villa Type B3



Ground Floor Plan

Interior

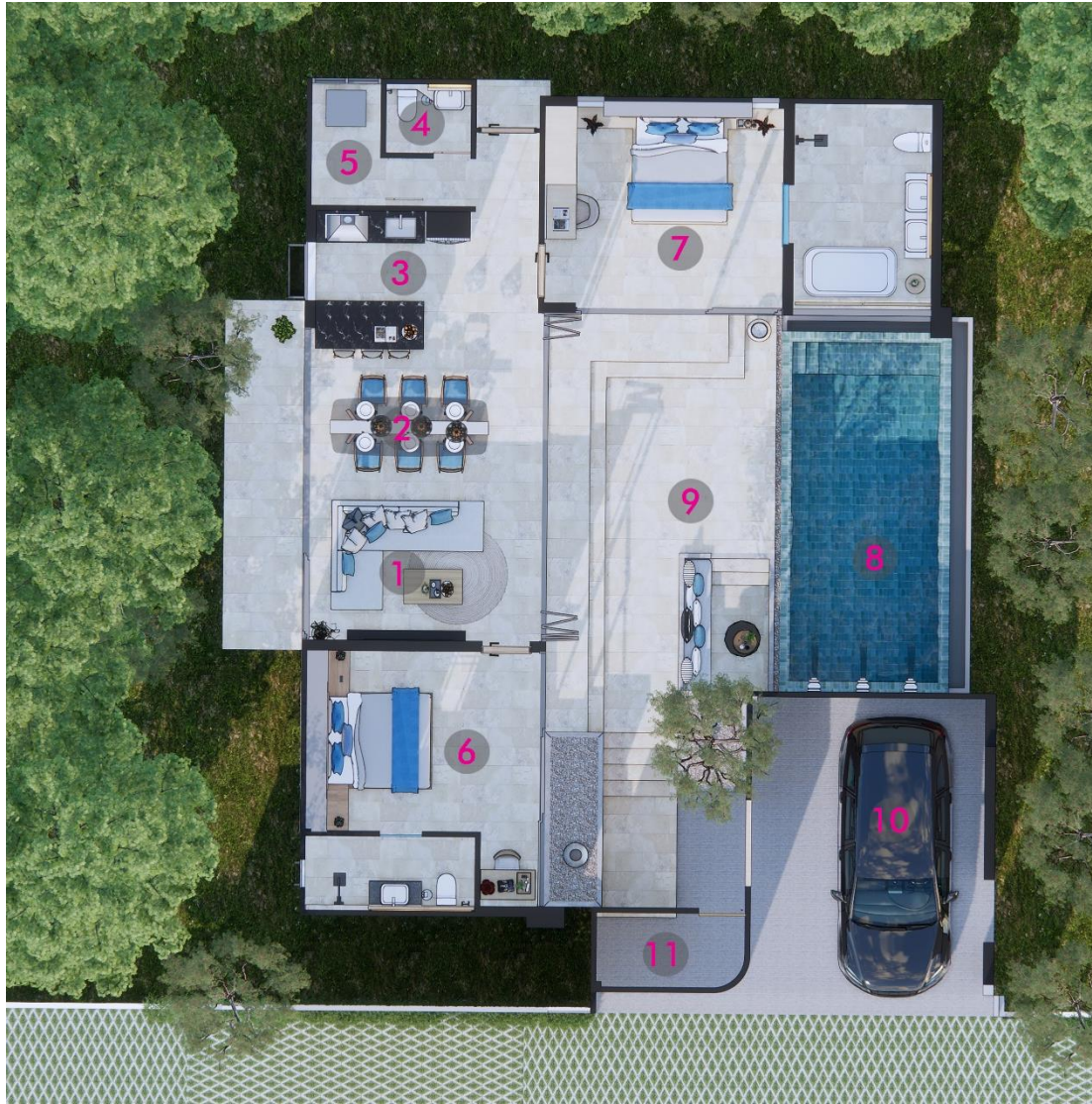
1. Living	}	46.79 sq.m.
2. Dining		
3. Kitchen		
4. WC		
5. Laundry		
6. Bed_1	32.83 sq.m.	
7. Bed_2	23.00 sq.m.	
8. Swimming Pool	22.48 sq.m.	

Exterior

9. Deck Pool	48.54 sq.m.	
10. Car Park	}	38.00 sq.m.
11. Pump RM.		

Total Area 211.64 sq.m.

Villa Type B4



Ground Floor Plan

Interior

1. Living	}	48.30 sq.m.
2. Dining		
3. Kitchen		
4. WC		
5. Laundry		
6. Bed_1		31.16 sq.m.
7. Bed_2		23.50 sq.m.
8. Swimming Pool		24.50 sq.m.

Exterior

9. Deck Pool Stair		48.00 sq.m.
10. Car Park	}	34.50 sq.m.
11. Pump RM.		

Total Area 209.96 sq.m.



Furnished with Impeccable Style

Samui Grand Park Hill provides the allure of Island living at its finest with elements of tropical and modern design presenting warm and welcoming interior living spaces. Natural stone and timber are used throughout, The interior living space seamlessly melds with the outdoor terrace and pool, blurring the lines between indoor and outdoor living and entertaining areas

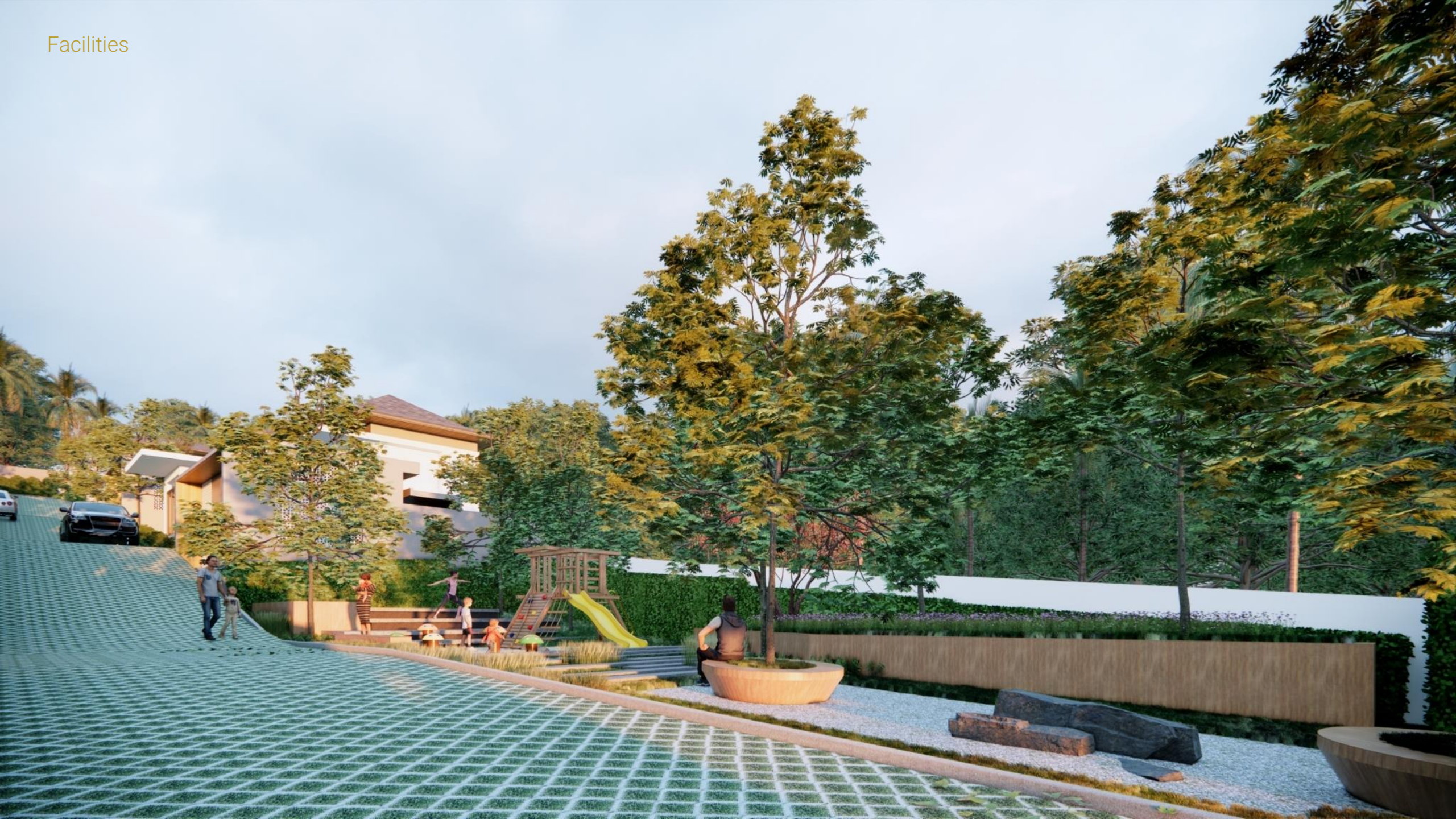
FACILITIES

Samui Grand Park Hill

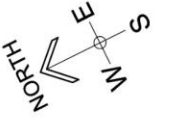
- Playground
- Outdoor Exercise
- CCTV Camera
- Automatic entrance and exit door



Facilities







-  Villa Type A
-  Villa Type B
-  Facilities

Masterplan

Plot Area

PLOT / TYPE	PLOT AREA (SQ.M.)	VILLA AREA (SQ.M.)	PRICE (THB)	PRICE (EUR)	PRICE (USD)
A1	397.48 SQ.M.	290.90 SQ.M.	8,990,000	248,000	259,900
A2	378.60 SQ.M.	290.90 SQ.M.	8,990,000	248,000	259,900
A3	378.60 SQ.M.	290.90 SQ.M.	8,990,000	248,000	259,900
A4	378.60 SQ.M.	290.90 SQ.M.	8,990,000	248,000	259,900
A5	396.27 SQ.M.	290.90 SQ.M.	8,990,000	248,000	259,900
B1	273.46 SQ.M.	200.45 SQ.M.	6,890,000	190,100	200,900
B2	268.15 SQ.M.	203.90 SQ.M.	6,890,000	190,100	200,900
B3	280.25 SQ.M.	211.64 SQ.M.	6,990,000	192,900	203,900
B4	313.56 SQ.M.	209.96 SQ.M.	6,990,000	192,900	203,900
Facility	289.78 SQ.M.	-	-	-	-

TERM OF PAYMENT	DEPOSIT	SIGN CONTRACT	HOUSE COMPLETE 50%	HOUSE COMPLETE 80%	HOUSE HANDOVER
CASH	200,000	30%	30%	30%	10%
BANK	200,000	30%	30%	30%	10%



BUY THE WHOLE PROJECT DISCOUNT 10%

Samui Grand Park Hill

Choosing Samui Grand Park Hill as your holiday home, along with a quality developer gives you the assurance of attention to every detail for your long term investment. The luxurious design incorporates not only the villa interior but also the surrounding areas to ensure tranquility, nature's beauty and elements such as water features, curved walls, grass driveway and children's play area. Add to your exiting Real Estate portfolio or plan your retirement property now.





Management

by MC Samui Real Estate

For further information please contact:



MC Samui International Real Estate



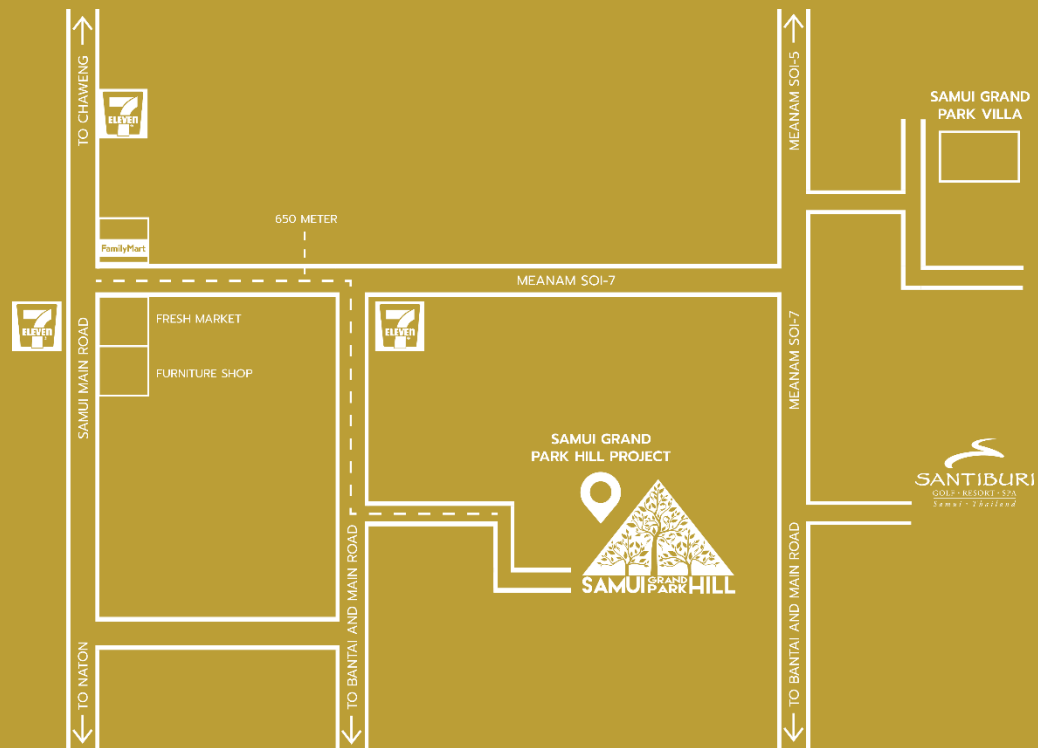
T +66 (0) 95 427 6789, +66 (0) 81 189 3493



samuigrandparkhill@gmail.com



www.mc-samui.com



samuigrandparkhill@gmail.com



Samui Grand Park Hill



+66 (0) 95 427 6789

+66 (0) 81 189 3493